

Personal pdf file for

David Oelen, Pascal Kaiser, Thomas Baumann,
Raoul Schmid, Christof Bühler, Bayalag Munkhuu,
Stefan Essig

With compliments of Georg Thieme Verlag

www.thieme.de

Accuracy of Trained Physicians is Inferior to Deep Learning-Based Algorithm for Determining Angles in Ultrasound of the Newborn Hip

Ultraschall in Med 2020; 41: 1

For personal use only.
No commercial use, no depositing in repositories.

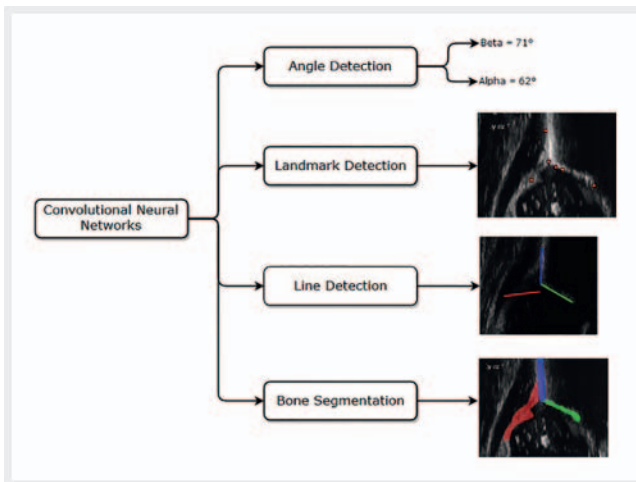
Publisher and Copyright

© 2020 by
Georg Thieme Verlag KG
Rüdigerstraße 14
70469 Stuttgart
ISSN 0172-4614

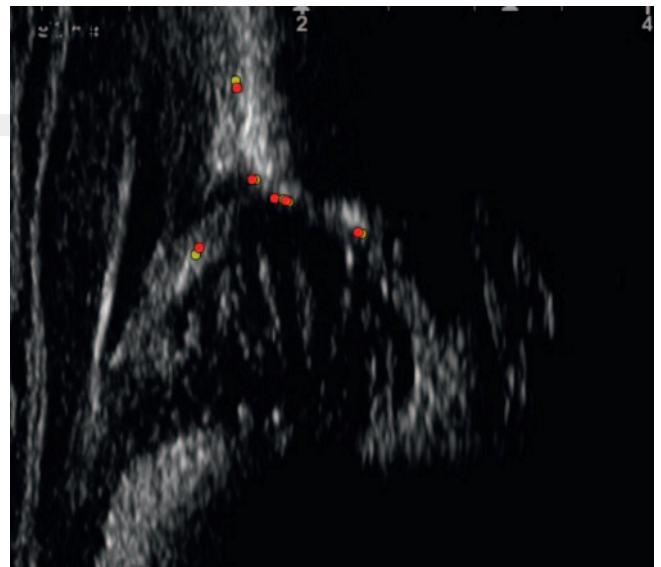
Reprint with the
permission by
the publisher only

 **Thieme**

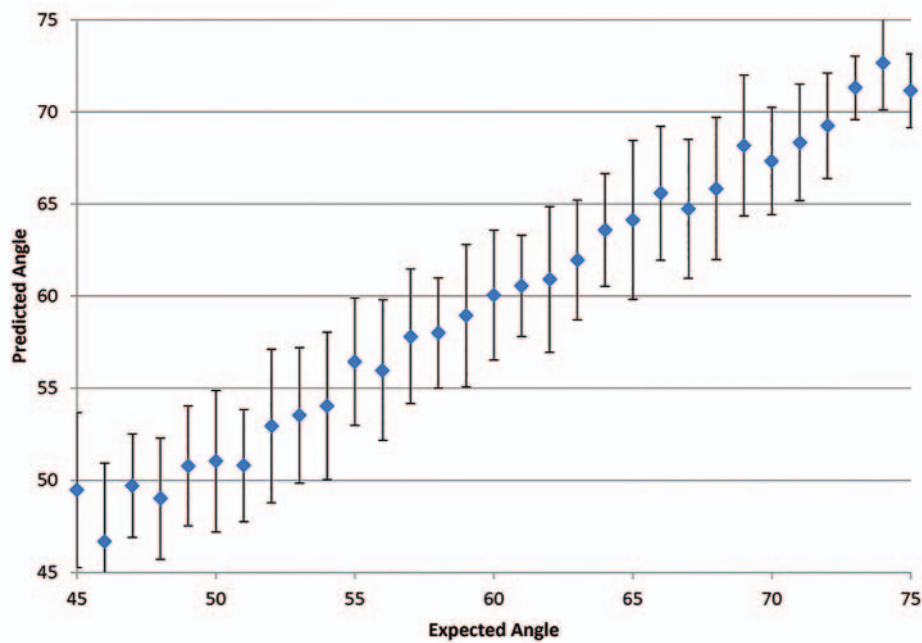
Supplemental Material



► **Fig. S1** CNN networks. “Bone Segmentation” has not been implemented in this study (implemented by Golan et al. in their original study).



► **Fig. S3** Example of expected (yellow) and predicted (red) landmarks on a hip image in landmark detection CNN.



► **Fig. S2** Performance of the Landmark detection network on the test set of the ground truth labels (with beams showing the root mean square error).